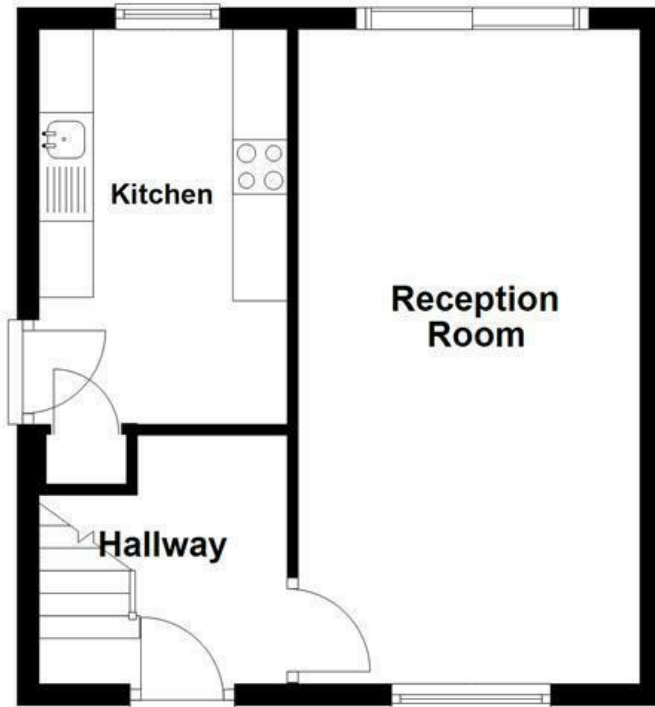
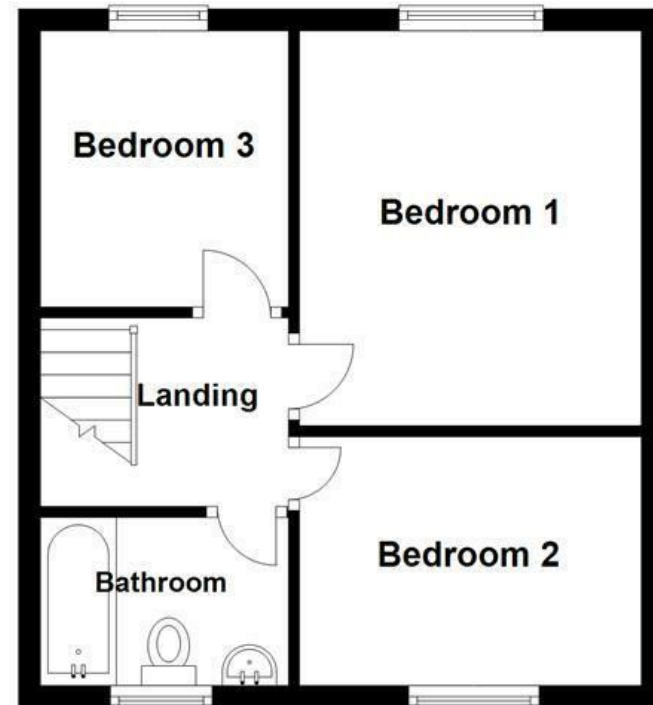


**Ground Floor**  
Approx. 391.6 sq. feet



**First Floor**  
Approx. 355.3 sq. feet



Energy Efficiency Rating		Current	Potential
Very energy efficient - lower running costs			
(92 plus) A			
(81-91) B			
(69-80) C			
(55-68) D	62		
(39-54) E			
(21-38) F			
(1-20) G			
Not energy efficient - higher running costs			
England & Wales		EU Directive 2002/91/EC	

These particulars, whilst believed to be accurate are set out as a general outline only for guidance and do not constitute any part of an offer or contract. Intending purchasers should not rely on them as statements of representation of fact, but must satisfy themselves by inspection or otherwise as to their accuracy. No person in this firm's employment has the authority to make or give any representation or warranty in respect of the property.

## Bertha Road, Rochdale, OL16 5BE

**£199,999**

Nestled on Bertha Road in the charming town of Rochdale, this delightful semi-detached home offers a perfect blend of comfort and convenience. Spanning an impressive 732 square feet, the property is ideal for families or those seeking a bit more space.

Upon entering, you are welcomed into a bright and airy reception room, perfect for relaxing or entertaining guests. The well-appointed kitchen provides a functional space for culinary pursuits, making it easy to prepare meals for family and friends.

Venture upstairs to discover three generously sized bedrooms, each offering a peaceful retreat for rest and relaxation. The family bathroom is conveniently located on this floor, ensuring that all essential amenities are within easy reach.

One of the standout features of this property is the large parking driveway, providing ample space for vehicles and enhancing the overall appeal of the home.

With its inviting atmosphere and practical layout, this property on Bertha Road is a wonderful opportunity for anyone looking to settle in Rochdale. Whether you are a first-time buyer or seeking a family home, this residence is sure to meet your needs and exceed your expectations. Don't miss the chance to make this lovely house your new home.

# Bertha Road, Rochdale, OL16 5BE

£199,999



- Tenure Leasehold
- Council Tax Band B
- EPC Rating TBC
- Ample Off Road Parking With Block Paved Driveway
- Three Well Proportioned Bedrooms
- Ideal Family Home With Viewing Essential
- Fitted Kitchen And Three Piece Shower Room
- Enclosed Rear Garden Space
- Easy Access To Major Commuter Routes
- Close Proximity To Local Amenities

## Ground Floor

### Internal

#### Hallway

7'6 x 7'6 (2.29m x 2.29m)

#### Living Room

10'4 x 19'9 (3.15m x 6.02m)

#### Kitchen

11' x 7'6 (3.35m x 2.29m)

## First Floor

### Bedroom One

11'5 x 10'5 (3.48m x 3.18m)

### Bedroom Two

10'5 x 7'6 (3.18m x 2.29m)

### Bedroom Three

8'4 x 7'7 (2.54m x 2.31m)

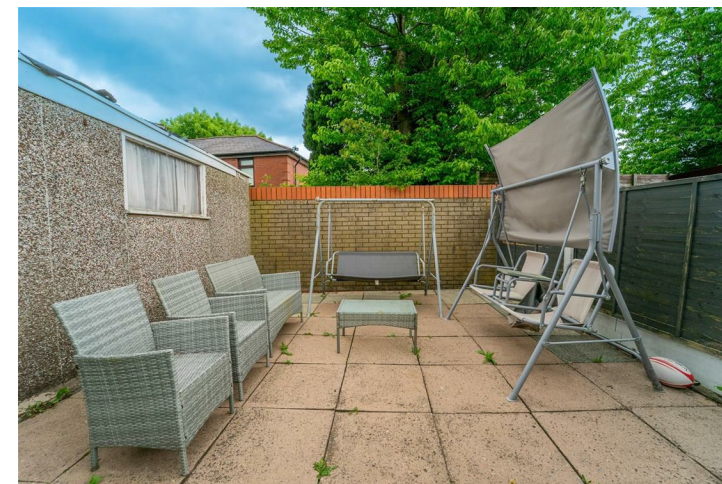
### Bathroom

7'7 x 5'5 (2.31m x 1.65m)

## External

### Front

### Rear



Tel: 01706396140

[www.keenans-estateagents.co.uk](http://www.keenans-estateagents.co.uk)